

**2012 Annual Operating Plan for the
City of Sparks Fire Department and the City of Reno Fire Department**

1. AUTOMATIC AID AREAS

The following areas are designated as Automatic Aid response, wherein both the Reno Fire Department in accordance with its dispatch procedures and Sparks Fire are automatically dispatched to any incident:

A. AUTOMATIC AID RESPONSE AREAS WITHIN THE CITY OF SPARKS FIRE DEPARTMENT

The Reno Fire Department will respond with one piece of apparatus (Type 1 Engine for all calls except Brush, One Type 3 Brush Engine to all Brush Alarms) to the following location on the attached map :

8500 Clean Water Way (Sparks Water Treatment Facility)

2. PARAMETERS OF AUTOMATIC AID

The following are the parameters under which Automatic Aid will be provide to the respective jurisdictions:

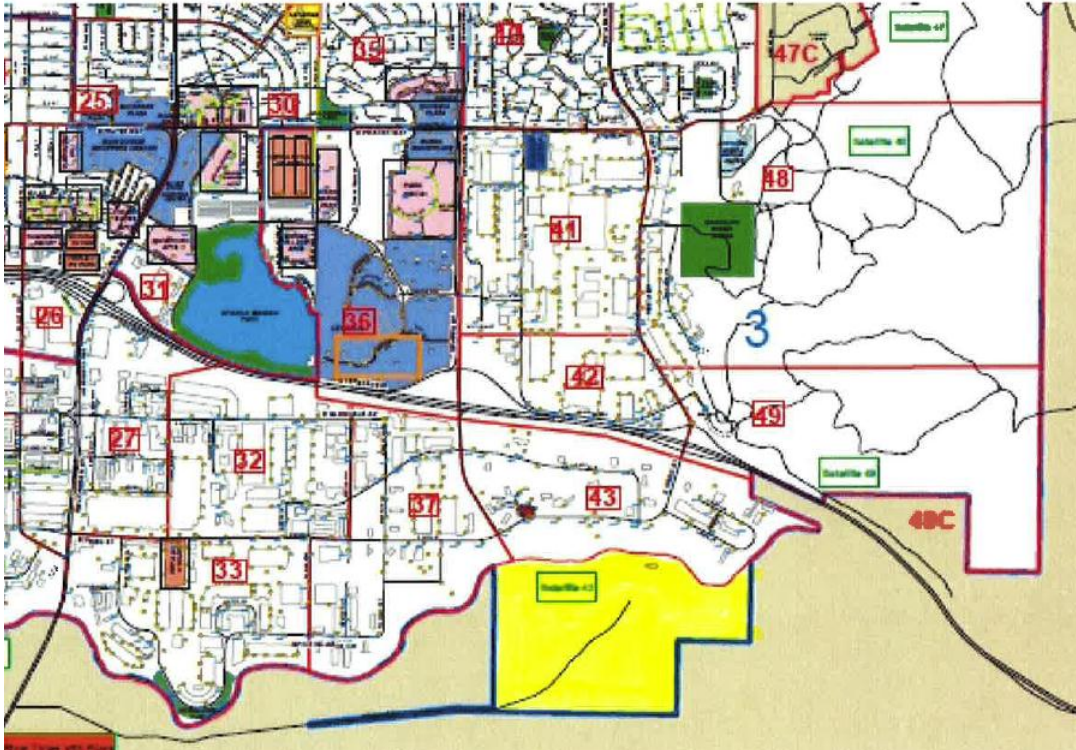
A. REQUEST BY SPARKS

Assistance will include a brush company response on all reported brush fires and an engine company response to all reported structure fires, medical assistance calls, or any other type of emergency incident within the area of Automatic Aid.

MAPS OF AUTOMATIC AID AREAS

Automatic Aid Agreement Map Locations and Response Guidelines Sparks Fire Department – Reno Fire Department

The following map depicts the automatic aid area agreed to by the Sparks Fire Department and the Reno Fire Department.



- The yellow area is 8500 Clean Water Way – the Wastewater Treatment Facility. RFD will send one engine to all incident types. SFD radio frequency will be used.

EQUIPMENT RATE SCHEDULES FROM EACH AGENCY

RENO FIRE DEPARTMENT EQUIPMENT RATE SCHEDULE

Equipment responding to an incident on an equipment resource order (“E” number) will be billed for hours worked as indicated on the Crew Time Report/Shift Ticket and will include travel time. Equipment rates do not reflect personnel costs.

EMERGENCY OPERATIONS EQUIPMENT:

- Aerial Apparatus \$125.00 per hour
- Structure Engine - Type I or II \$105.00 per hour
- Brush Engine - Type III \$85.00 per hour
- Rescue Unit \$75.00 per hour
- Squad/Air Unit \$75.00 per hour
- Haz Mat Unit \$75.00 per hour
- Haz Mat Unit w/Trailer \$85.00 per hour
- Heavy Rescue Unit \$75.00 per hour
- Heavy Rescue Unit w/Trailer \$85.00 per hour
- Water Rescue Unit \$75.00 per hour
- Water Rescue Unit w/Boat \$85.00 per hour
- Emergency Operations Command Van \$75.00 per hour
- Other Emergency Operations Equipment \$75.00 per hour

SUPPORT EQUIPMENT:

- Sedan \$49.00 per day
- Pickup \$55.00 per day
- Van \$65.00 per day
- SUV \$76.00 per day
- Mechanic Truck \$76.00 per day
- Other Support Equipment \$76.00 per day
-

SPARKS FIRE DEPARTMENT APPARATUS / VEHICLE RATES SCHEDULE

Apparatus rates are billed for hours worked, including travel time from time of dispatch.

- Structure Engine - Type I \$90.00/hr
- Brush Engine - Type III \$70.00/hr
- Brush Engine – Type VI \$70.00/hr
- Water Tender Type I \$70.00/hr
- Haz Mat Unit \$100.00/hr
- Heavy Rescue Unit \$75.00/hr
- Heavy Rescue Unit w/ Trailer \$85.00/hr
- Water Rescue Unit w/ Boat(s) \$85.00/hr
- Aerial Apparatus \$125.00/hr

Support Equipment Rates:

- Command Vehicle - SUV \$96.00/day plus \$0.55 per mile
- Pickup \$86.00/day plus \$0.55 per mile
- Other (¾ ton & above) \$96.00/day plus \$0.55 per mile
- Polaris Ranger UTV \$100.00/day
- Privately Owned Vehicle \$0.55 per mile

PERSONNEL RATES FOR EACH AGENCY

The following personnel rates are for demonstrative purposes only. All rates shall be based on actual cost to each Agency. Billed rate will be at the actual cost and may be different than the rate quoted in this document. Backfill personnel and their invoiced amounts will be shown on the same invoice as the incident personnel. Backfill dates will be noted.

RENO FIRE DEPARTMENT PERSONNEL RATE SCHEDULE

FIRE DEPARTMENT LINE PERSONNEL

56 Hour Personnel – Portal to Portal Hourly Rates:

	Base Rate	Overtime Rate	Call Back Overtime Rate
Battalion Chief	\$ 37.93	\$ 56.90	\$ 79.52
Captain	\$ 27.67	\$ 41.51	\$ 58.01
Pump Operator/Driver	\$ 24.53	\$ 36.80	\$ 51.43
Firefighter - Step 2	\$ 18.37	\$ 27.56	\$ 38.52
Firefighter - Step 3	\$ 20.33	\$ 30.49	\$ 42.61
Firefighter - Step 4	\$ 22.28	\$ 33.42	\$ 46.70

Rate Definitions:

Overtime Rate: Base Rate x 1.5

Call Back Overtime Rate: Base Rate x 1.5 x 39.75% (PERS - Retirement)

FIRE DEPARTMENT OVERHEAD PERSONNEL

40 Hour Personnel:

	Base Rate	Overtime Rate	Call Back Overtime Rate
<u>Portal-to-Portal Positions:</u>			
Division Chief	\$ 61.16	\$ 91.74	\$ 128.21
Training Captain	\$ 38.74	\$ 58.11	\$ 81.21

Non-Portal-to-Portal Positions:

Investigator/Inspector	\$ 34.87	\$ 52.31	\$ 73.10
Mechanic	\$ 34.87	\$ 52.31	\$ 73.10
Logistics Officer	\$ 33.90	\$ 35.40	N/A
Emergency Dispatch Supervisor	\$ 37.37	\$ 56.06	N/A
Emergency Dispatcher	\$ 32.29	\$ 48.44	N/A

Rate Definitions:

Overtime Rate: Base Rate x 1.5

Call Back Overtime Rate: Base Rate x 1.5 x 39.75% (PERS – Retirement)

SPARKS FIRE DEPARTMENT PERSONNEL BASE RATE SCHEDULE

Base rates are shown at straight time, but will be billed, portal to portal, at the actual cost to the department including the backfill of personnel on shift.

- **Division Chief** \$59.29/hr
- **Battalion Chief** \$36.67/hr
- **Training Captain** \$41.83/hr
- **Fire Captain** \$26.82/hr
- **Fire Apparatus Operator** \$23.52/hr
- **Firefighter/EMT II** \$21.41/hr
- **Investigator/Inspector** \$36.14/hr
- **Mechanic** \$30.55/hr

IN WITNESS WHEREOF, The parties hereto have caused this Agreement to be executed as of the day and year herein below.

Dated this _____ day of _____, 2012.

Attest by: _____ City Clerk, City of Sparks	Attest by: _____ City Clerk, City of Reno
_____ Andreas Flock, Fire Chief Sparks Fire Department Sparks, Nevada	_____ Michael Hernandez, Fire Chief Reno Fire Department Reno, Nevada
_____ Geno Martini, Mayor City of Sparks, Nevada	_____ Robert A. Cashell, Senior, Mayor City of Reno, Nevada
Approved as to Form: _____ Sparks City Attorney	Approved as to Form: _____ Reno City Attorney